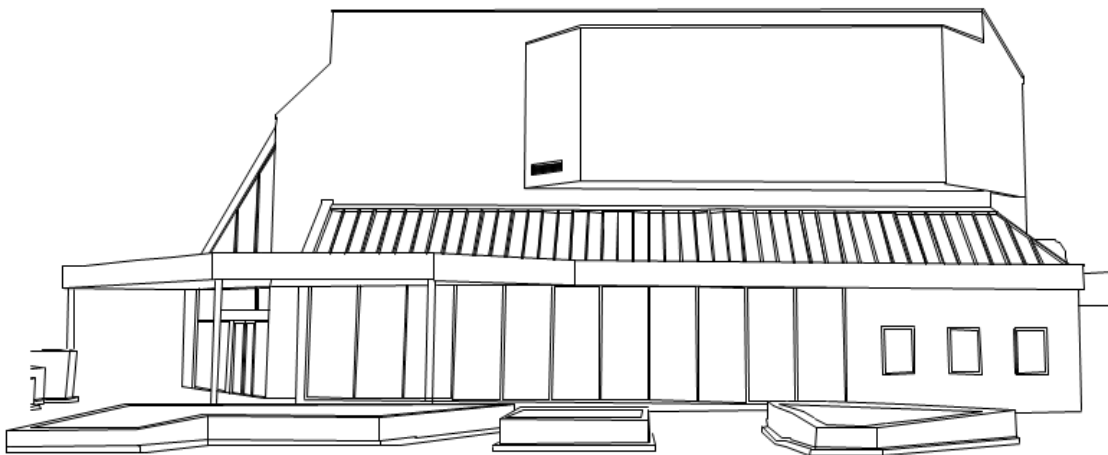




WONTHAGGI UNION COMMUNITY ARTS CENTRE **TECHNICAL SPECIFICATIONS**

V2.2 March 2022



96 Graham Street, Wonthaggi
Victoria, 3995

03 5671 2714 | wonthaggi.artscentre@basscoast.vic.gov.au

www.wonthaggiartscentre.com.au



Table of Contents

Introduction.....	4
1. Auditorium.....	4
Theatre Capacity.....	4
2. Stage Details.....	4
Dimensions.....	4
Stage Floor.....	4
Stage painting.....	4
Stage Access/Egress.....	4
Orchestra Pit.....	5
3. Dressing Rooms/Back of House.....	5
Disabled Access between BOH & Stage.....	5
Dressing Rooms.....	5
Project Space.....	5
Green Room.....	5
Kitchen.....	5
Laundry.....	6
4. Foyer.....	6
5. Safety.....	7
Test & Tagging.....	7
Inductions.....	7
Wardens.....	7
Company Attendance.....	7
Incidents & Near Misses.....	7
First Aid Kits & Defibrillator.....	7
Fire Detection & Suppression System.....	7
6. Sound Reinforcement.....	8
System Control.....	8
Speakers/Amplifiers.....	8
Playback (Available on request).....	8
Microphones & DIs.....	9
Other.....	9
Communications.....	9
7. Lighting Equipment.....	10
Lighting Rigging.....	10
Lighting Patching.....	10
Lighting Control.....	10

Dimmers and Patching	11
Additional Power	11
Lanterns	11
House Lights	12
Work lights	12
8. Audio Visual Equipment.....	12
Projector	12
Media Players	12
Lectern.....	12
9. Rigging & Staging.....	12
Rigging Equipment	13
Stands	13
Stage Cloths	13
Valance.....	13
House Curtain	13
Legs & Borders	13
MS & US Tabs.....	13
Cyclorma.....	13
Staging Units	13
10. Access Equipment.....	14
Height Safety.....	14
EWP (Elevated Work Platform)	14
Ladders	14
Loading Dock	14
Parking	14
11. Contact Information	15

Introduction

The Wonthaggi Union Community Arts Centre, also known as The Union or The WUCAC, was built in 1925 by the Miners Union. It stood up until the 10th of April 1980 when fire razed the building. However, through the commitment of the then known Borough of Wonthaggi, the theatre was rebuilt and opened on the 13th of November 1982. Today the Centre is managed by Bass Coast Shire Council who provide a full program of live performance theatre, music and bands, cinema and community events.

1. Auditorium

Theatre Capacity

The Wonthaggi Union Community Arts Centre (WUCAC) is a proscenium arch theatre and can accommodate up to 416 patrons*. The theatre is wheelchair accessible and fully air-conditioned.

The theatre doubles as a cinema during of peak show seasons and School Holiday periods.

If you require seats to be held for follow spots, additional sound, AV or lighting equipment or for filming video, this will reduce the number of seats available.

*Note Capacity limits subject to change in accordance with Government Regulations.

2. Stage Details

Dimensions

Width, wall-to-wall	19.15m
Depth, setting line -to- rear wall	9.75m
Height to underside of Proscenium Arch	8.84m
Width of Proscenium Arch	9.96m
Depth of Thrust Stage	3.32m
Width of Thrust Stage	8.76m
Width of Prompt Side Wing (OS Tab to Wall)	4.13m (w) Narrowest
Width of Opposite Prompt Side Wing (OS Tab to Wall)	2.01m (w) Narrowest

Stage Floor

Tongue and groove (hoop pine) timber on concrete stilts overlaid with tempered Masonite. Painted Scenic Studios Stage Black. Please consult with WUCAC technical staff before using fixings (screws or nails) to the floor or walls. Stage floor point loading 300kg

Stage painting

The Floor may be painted for the duration of your show, however the stage must be painted back to standard before departure. Scenic Studios Stage Black paint must be used to return the stage to normal. Any painting from Arts Centre staff will incur a fee.

Stage Access/Egress

Pedestrian Access

- USOP Corner to Cross Over
- USPS Corner to Cross Over
- MSPS Wall to Eastern Emergency Exit and Stairwell
- DSPS Adjacent SM Desk, Access to Auditorium
- Removable stairs located on the OP & P Sides of the stage into the Auditorium.

Loading Access

- Loading dock roller door from rear lane. 2.72m (w) x 3.77m (h)
- Rear stage loading door from dock to crossover 2.19m (w) x 3.73m (h)
- Rear stage loading door from crossover to stage 3.69m (w) x 2.34m (h)

Orchestra Pit

The orchestra pit is located under the thrust of the stage and can be accessed via the small doors located in the DS PS Corner. The Pit includes a removable conductor lid in the DS Centre of the stage and Removable lids in the DS PS corner where the entrance is located.

The Pit also includes an enclosed drum booth.

The utilization of the Orchestra pit will affect the stage and where sets are built, please contact us for more information.

3. Dressing Rooms/Back of House

Disabled Access between BOH & Stage

Please Note*: There is no direct accessible/wheelchair access between the stage and Dressing/Back of House (BOH) areas.

Access is via a portable Lift which can be set up on the DS OP Corner. Access to the rear dressing rooms is through the public emergency exit, outside then into the green room entrance.

Dressing Rooms

Two dressing rooms available from the rear crossover, one upstairs one downstairs.

Dressing Rooms Each Consist of:

- Capacity 9 People Comfortably*
- Includes 1 Toilet, Sink and Shower
- Benches with 9 Mirrors and Lights
- Heating & Cooling

Project Space

The project space is a large open space that can fit up to 30 people comfortably. This room can be customized and set up in any configuration. WUCAC offers tables, chairs and removable partitions allowing any configuration. Access is from the rear stage crossover, downstairs.

- Capacity 30 People Comfortably*
- Access to Male & Female Toilets
- Access to an additional dressing area for large events
- Heating & Cooling
- Access to the Green room and Kitchen Facilities
- Access to the Laundry

Green Room

The green room is a small comfortable room which is accessed either from the outside of the building (stage door) or from the Project Space. It has direct access to the kitchen, toilets and Laundry.

- Couches
- Pianola

Kitchen

We provide a BOH kitchen to all hirers to use during their show season. All food supplies must be supplied by the hirer.

- Electric Stove/Oven
- Microwave
- Sandwich Press
- Toaster
- Fridge
- Dishwasher
- Boiling and filtered water.
- All crockery, cutlery, pots and pans.

All dishes, kitchen must be cleaned prior to departure. Should the kitchen remain unclean a cleaning fee will be on-costed to the hirer.

Please note any activation of fire detection will result in charges to hirers account.

***Note Capacity limits subject to change in accordance with Government Regulations.**

Laundry

We provide a Laundry to all hirers to use during their show season.

- Washing Machine
- Dryer
- Iron and Ironing Board
- Steamer

4. Foyer

The foyer has a small PA system capable of making announcements, playing CDs or connecting to a portable music device. The foyer also consists of show announcement system which will be operated by the FOH staff to usher crowds to their seat.

The foyer is also a gallery space for our Visual Arts exhibitions booking of this space can be arranged with Arts Centre Staff.

The kiosk will open for each show unless stipulated by the hirer. The kiosk can provide popcorn, confectionary, Ice Cream and Alcohol. Please discuss with our staff for options.

5. Safety

Test & Tagging

All portable electrical equipment provided by the venue is tested and tagged according to AS/NZS3760 Australian Standard

Any portable electrical equipment brought into the venue **must be** tested and tagged to this Australian Standard. Testing of a small number of items may be done by the venue staff by prior arrangement and **at cost** to the hirer.

Inductions

All hirers will be required to undertake a site safety induction prior to commencing any works at the venue. This site safety induction will be given by the supervising technician. Schools and large groups will be given a general safety induction on their arrival, this induction will be valid for the entirety of the hire only.

Wardens

The hirer's stage manager or a head delegate of the group will become the area warden for the BOH area. This person will be inducted on the warden procedure on arrival of their visit. The Warden will be in charge of marshalling their own company and BOH area in the case of an emergency and will be under the direction of the Chief Warden.

Company Attendance

The hirer is required to have a list of company attendee's that can be called on in the event of an emergency. This must be accessible by the hirer's stage manager or head delegate (Section 5 Wardens) at all times.

Incidents & Near Misses

All incident and near misses must be reported to the Technical Supervisor/ FOH Manager as soon as possible. A Bass Coast Shire Council Incident form must be completed, investigated and submitted by Bass Coast Shire Council staff.

First Aid Kits & Defibrillator

Wonthaggi Union Community Arts Centre has two First Aid Kits and a Defibrillator available in the event of an emergency. We also have staff on site that can administer first aid if required.

First Aid Locations:

- Defibrillator and First Aid Kit: FOH in Box Office
- First Aid Kit: Project Space

Any use of First Aid equipment must be reported to BCSC staff as soon as possible (Section 5 First Aid)

Fire Detection & Suppression System

The venue is equipped with a fire detection and suppression system, which cannot be tampered with in any way. Including a sprinkler system above the stage.

The venue is equipped with a timed smoke detection isolation system for the use of atmospheric effects. Please consult the technical supervisor during your visit so the system can be isolated.

In the event that the fire alarm does activate and it was deemed that the activation was caused by the hirer, the hirer will be liable for all cost associated with the attendance of the fire brigade.

6. Sound Reinforcement

The Wonthaggi Union Community Arts Centre is equipped with an advanced audio system sufficient for most productions and cinema sessions.

System Control

Control Console	Allen & Heath Advantis 64 Channel/42 Bus Digital Mixer 128 Dante Expansion Card
Patching	Allen & Heath GX4816 [48 XLR inputs, 16 XLR outputs] Fixed: Located on Prompt Side Stage AVR 2 x Allen & Heath DX168 [16 XLR Inputs, 8 XLR Outputs] Portable

Speakers/Amplifiers

Speakers FOH	3 x EAW QX594i Speakers Located on above Pro Arch on wall Left, Centre, Right 4 x EAW SB528 Duel 18" Subs Located 2 either side of Pro Arc on wall
Delay	2 x EAW KF394 Delay Speakers Located above Row J
Side Fills	Available for cinema only
Fold Back	4 x EAW Radius RSSX 12" Self Powered (Dante)

Playback (Available on request)

Items may be booked during your production meeting, or by telephone or email prior to your event

Digital	Mac Book Pro - Running Qlab 4 (Audio & Vision) iPad
Compact Disc	TASCAM CD-200SB

Microphones & DIs

Items may be booked during your production meeting, or by telephone or email prior to your event

Type	Qty	Model
Direct Inputs (DI)	3	Radial PRO D2
	2	Radial PRO DI
	1	Radial Stage Bug
	2	Unika USB DI
	2	Leem DI
Handheld Microphones	4	Sennheiser e835
	2	Sennheiser e865
	1	Sennheiser e845s
	4	Shure SM57
	2	Shure SM58
Instrument Microphones	1	DPA 4099 (Stereo Piano Mics)
	2	Sennheiser e906
	4	Sennheiser e914
	4	Sennheiser e604
	1	Sennheiser e602-II
	4	Sennheiser e614
Shotgun Microphones	4	Sennheiser MKE400
Wireless Microphones	6	Sennheiser EW500 G3 Wireless Systems
	6	Sennheiser EW500 G3 Wireless Handhelds 835 Capsules
	3	Sennheiser EW100 G4 Beltpacks (no lapels/headsets available)

Other

Microphone Stands	8	K&M Tall Boom Stands (Black)
	4	K&M Short Boom Stands (Black)
	5	K&M Straight Round Base Stands
Microphone & Audio Cables		Assorted

Communications

The Arts Centre is equipped with Jands/ASL communications System throughout the stage and BOH with a Jands E101 Master station located in the stage managers desk.

The venue does not have a wireless communications system. However this can be hired at the hirers cost.

7. Lighting Equipment

Lighting Rigging

Clearance must be given by the technical supervisor after lighting has been rigged to ensure all safety standards have been met.

The Lighting Rig consist of Fixed Overhead Bars FOH which can be accessed from 2 lighting bridges accessed from a set of stairs off the PS wall of stage or through the Bio Box. The Perch Lighting Bars can be accessed from a ladder in the auditorium.

On stage lighting bars can be accessed from the electronic winch system. The standard trim height of on stage LX bars is 6m.

All Lighting Bars have a WLL of 350kg, with 3 loading points equally spaced across the winched lighting bars.

Fixed bars					
LX BAR	TRIM HEIGHT	DMX (5 PIN XLR)	TECH PATCH (CAT 6e)	LIGHTING CIRCUITS	PATCH NUMBERS
FOH 2		2	2	12	1-12
FOH 1		2	2	12	13-24
OP PERCH		2	1	6	
PS PERCH		2	1	6	
Motorized winch bars					
LX1	6m	2	-	18	
LX2	6m	2	-	12	
LX3	6m	2	-	12	
LX4	6m	2	-	12	

Lighting Patching

The Venue has a range of different patch bars and locations throughout the venue.

LOCATION	PATCH BAY NAME	DMX (5 PIN XLR)	TECH PATCH (CAT 6e)	LIGHTING CIRCUITS	PATCH NUMBERS
Orchestra Pit OP	TP04	1	2	6	
Orchestra Pit PS	TP05	1	2	6	
DS OP	TP01	2	2	6	
US OP	TP02	1	1	3	
US PS	TP03	1	1	3	
DS PS	TP06	-	-	6	
FLYFLOOR	AVR PS	4	Many	-	

Lighting Control

Control Console

ETC Ion XE Console 16k

With 2 x 20 Fader Wing and 2 x Touch Screens

ETC Nomad 4k (Backup)

Setup at Stage Managers Desk

DMX Patching

2 x ETC 4 Way Responses MKII Gateway's

SCAN Network (Universe 1 to 8)

Fixed in Bio Box AV Rack

2 x ETC 2 Way Responses MKII Gateway's (portable)

SCAN Network (Universe 9 to 12)

Portable, to be used with additional lighting

4 x LSC 10 Way Data Splitters

RJ45 Connectors to patch into house system

(Universe 1 to 4)

Fixed in Bio Box AV Rack

1 x LSC 10 Way Data Splitters

5Pin XLR Connectors

Portable

Dimmers and Patching

Patch bay and dimmers located on the fly floor which can be accessed from the stairs PS of stage.

Dimmers 4 x Bite craft 12 channel (48 channels x 2.4KVA)
2 x LSC GenVI 12 channel (12 channels x 2.4KVA) GenVI rack can be set to TruePower, creating either an Auto-on nondimmed outlet or a DMX controllable non-dimmed outlet. Please talk with technical staff if you require this.

Additional Power

Fly Floor (Dimmers) 2 x Wilco 5 pin 50 amp 3 phase
Stage floor (PS Corner) 1 x Wilco 5 pin 32 amp 3 phase
Bio Box 1 x Wilco 5 pin 32 amp 3 phase

Lanterns

All lanterns are equipped with hook clamps, bolt sets, safety cables and color frames. Unless noted, Fresnel's are equipped with barn doors.

Included lanterns in standard lighting rig (see lighting plan)

MAKE	MODEL	BEAM ANGLE	WATT	DETAIL/ACCESSORIES	QTY
Chauvet	Ovation E910FC	25/50 x 6 15/30 x 20		Gobo Holder	20
Phillips	SL Par 155	8/40			16
Infinity	S401	6-30		Profile Moving Light	6
Infinity	iV-741	3-60		LED Wash Moving Light	16
Selecon	Acclaim	18/34	600W		6
Selecon	Acclaim	24/44	600W	With Iris	2
Selecon	RAMA	7/50	LED	Barndoor	8
Source 4	Jnr	25/50	575W	Gobo Holder	4
Showpro	LED CYC 101				6

Additional lanterns for use (Please contact venue for pricing & availability)

MAKE	MODEL	BEAM ANGLE	WATT	DETAIL	QTY
Fresnels/PC's					
Selecon	RAMA LED		1200w	Barn doors	2
Selecon	Acclaim Fresnel MK11		650w	Barn doors	2
Selecon	Acclamin PC		650w	Barn doors	14
Selceon	Acclaim Fresnel		650w	Barn doors	12
Profiles					
Selecon	Pacific	-	1000w	Lamp Base & Housing Only	6
Selecon	Pacific	23/50	-	Lens Barrel Only	4
Selecon	Pacific	14/35	-	Lens Barrel Only	4
Selecon	Axial MK11	18/34	600w		4
Selecon	Axial	24/44	600w		5
Selecon	Acclaim Axial	24/44	600w		8
Chauvet	Ovation E910FC	25/50	-	Lens Barrel Only	6
Followspots					
Selecon	Pacific 80v Followspot	7.5/19	1200w		2
Selecon	Pacific Follospot	7.5/19	1000w		1
LED					
Showpro	TriLED	35			12
Event Lighting	Pix Bar 12x12	30	12w		4
Event Lighting	LED Blinder RGBW	60	2 100w		3
Phillips	SL155	8/40			4
Other					
-	Pinspot		50w		6
-	UV Fluro		50w		4

House Lights

House lights are controlled either via the Lighting console or a Phillips Dynalite system located in various locations around the building.

The DMX assignment for house light control on the console is address 500 (Relay) 501 – 503 (Dimmers). As part of the standard rig the house lights are controlled on universe 4.

Work lights

The venue includes 2 x 200w LED flood lights for use for work light. These are located on FOH 1 and LX 4. The switch for these is located PS next to the stage managers desk.

8. Audio Visual Equipment

WUCAC can provide the following audio-visual equipment to the hirer:

All items listed must be booked prior to your event to ensure availability.

Projector

Epson EB-G790U Projector

Media Players

Macbook Pro running Qlab 4 (see **3.5 Playback** for more details. This is included in hire and is not at additional cost)

Lectern

1 x free-standing black Lectern with 2 x Lectern Microphones and Light

Additional AV equipment may be sub-hired through WUCAC suppliers

9. Rigging & Staging

Rigging Equipment

There is an assortment of rigging gear including, slings, shackles, clamps and pipe, etc. available. Any rigging must be discussed prior to bump in, and a qualified rigger employed to carry out the work where necessary.

All rigging in the venue must be installed and signed off by a licensed rigger.

All rigging must be coordinated through and approved by **WUCAC Technical Supervisor**.

Stands

A range of floor lighting stands available for use.

8 x Boom Bases with 3.2m Pipe
50 x Boom Arms (VLL 50Kg)
5 x Flat Lighting Bases
10 x Barrel Floor Stands

Stage Cloths

All curtains are hung off 50mm square battens and can be lowered in and removed or adjusted. With the exception of the valance and house curtain. All Drapes must be treated with fire retardant and meet AS3959:2010

Valance

Red Valentine valance dead hung on a tab track directly behind the proscenium arch. The Valance is operated by a draw string which is located on the leading end of the curtain.

1m (h) x 12m (w)

House Curtain

Red Valentine hung on a motorized tab track. The house curtain can be controlled next to the SM Desk, Bio Box or Projection room. The curtain is attached to a variable speed motor which can be adjusted by the venue technician.

5.5m (h) x 12m (w) with a split in the middle

Legs & Borders

Located on 5 bars consist of a set of black wool borders and legs. The legs can be adjusted to narrow or widen the stage.

All sets are hung off winch bars and can be removed as required.

Legs – 6m (h) x 3m (w) Variable
Borders – 2m (h) x 14m (w)

MS & US Tabs

2 x Black Wool MS and US Tabs are hung off a manual tab track and can be controlled from the PS wing.

5.5m (h) x 12m (w) with a Split in the middle

Cyclorma

14m (w) x 6m (h) white gauze located on a winch bar.

Staging Units

Available for use: 6 x of 1m x 1m x 400mm high stage pieces. Which can be joined make stage risers or platforms.

10. Access Equipment

Height Safety

All workers working with ladders, EWP's and other height access equipment must be competent and suitably qualified for the task they are undertaking. Any scaffolding over 4m (platform height) must be built and signed off by a licensed scaffolder.

The use of the EWP (under 11m) requires a minimum yellow card and a EWPA yellow card. Any use of a Boom type EWP or EWP that can extend above 11m will additionally require plus a Work Safe high risk card (or equivalent).

EWP (Elevated Work Platform)

The theatre provides 1 x Genie AWP-30s model, which has an 11.0m working height and is a push around vertical lift.

The EWP is fitted with outriggers which must be used at all times when operating the EWP.

Ladders

We have a range of ladders throughout the venue.

- Fibreglass 3.5M platform ladder
- Standard Aluminum A Frame Ladder 10ft
- Little Giant Adjustable Ladder 8ft

Loading Dock

The Loading dock is accessed via the laneway (Hefford Lane) at the rear of the building. For large vehicles it is best to enter from Bass Hwy. The Arts Centre is the second last building on the left hand side before the end of the lane. The lane way is utilized by the public and must stay clear at all times.

There is limited access to large trucks. Any trucks larger than a HR class vehicle please contact the Centre Technician prior, to arrange alternatives. There is very limited room to reverse a vehicle directly onto the loading dock. A right angled approach may be required.

A Hydraulic lift is expected to be installed in mid 2022

Parking

There is very limited long term parking in the area. We offer 3 car size parks at the rear of the building however these are not guaranteed and are subject to trucks loading and unloading.

Other Parking

- 1 hour parking along Graham Street, directly in front of the Arts Centre
- 3 hour parking in the car park directly across the road from the arts Centre next to the Wonthaggi Workmens Club.
- All day parking along Watt Street.

Bass Coast Shire Council will not take responsibility for any infringements issued.

11. Contact Information

Centre Technician

Trevor Wyhoon

03 5672 2714

trevor.wyhoon@basscoast.vic.gov.au

FOH, Box Office & Venue Bookings

Jacqui Francis

03 5671 2178

jacqui.francis@basscoast.vic.gov.au

General Enquires

03 5671 2470